

A Neighbourhood Plan

What is it?

In very simple terms a Neighbourhood Plan is a document that sets out planning policies for the neighbourhood area. Planning policies are used to decide whether to approve planning applications.

It is written by the local community, the people who know and love the area, rather than the Local Planning Authority.

It's a powerful tool to ensure that the community gets the right types of development, in the right place.

Local people can create a plan that allows them to develop planning policies that reflect the priorities of their area and have real legal weight. The whole community decides at a referendum vote whether the local authority should bring the plan into force.

Why do we need one?

There is enormous pressure for development across the UK, to provide housing, employment, community facilities and infrastructure. Some of the demand for new development will have to be met in this area.

The broad policies with which any Neighbourhood Plan must comply are set out in the UK Government's National Planning Policy Framework and in Wiltshire Council's Core Strategy.

Your Steering Group is keen to bring local views to bear in mind when deciding how this is done.

The Process

The process for devising, agreeing and adopting a Neighbourhood Plan broadly follows **5 steps** as shown below. You will have the opportunity to comment along the way and become involved if you wish.

Stage 1 Scoping



Concerns, wishes & ideas

You will be asked to think about what is important to you and what changes you would like to see in your Parish.

Let us know on the enclosed survey, by email or simply by talking to us.

Stage 2 Plan making



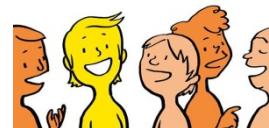
A draft plan

We will use your ideas and feedback to help shape a draft Neighbourhood Plan.

This stage will involve more research and we'll run focus groups on specific topics.

The draft plan will be prepared by the Steering Group, supported by Wiltshire Council.

Stage 3 Consult & review



Feedback and a final plan

Once the draft Plan is complete it will be made available to see and you'll have the opportunity to comment on it.

A final plan will then be prepared and published. It will be submitted to the local authority and examined by an independent inspector.

Stage 4 Agreement



Referendum

If the plan passes these checks then the local authority will organise a public vote so that everyone who lives in the neighbourhood area can decide if they support it.

Stage 5 Adoption



Policy

If more than 50% of voters are in favour of the plan, the local authority must bring it into force. This means it will form part of the statutory Development Plan for that area.

Any decisions about whether to grant future planning permission in the neighbourhood area must be in accordance with our plan.

What to do next

The process for creating our own Neighbourhood Development Plan starts here...

Tell us what you care about in Lea, Cleverton, Garsdon and the surrounding countryside now.

We would like to hear your comments on matters which you consider important in shaping the future of our community.

Please use our Householder Survey to tell us your wishes, views, hopes, desires, priorities, concerns, likes, dislikes, ideas, enthusiasms or any comments you think are relevant.

Once completed just pop your questionnaire into one of the collection points located at: Lea Primary School, the Rose and Crown, or give them to one of our Steering Group Members.

More questionnaires are available at each of these locations or you can email us or download them from the Website.

Don't forget to make your views clear to us by sending back by 4 March 2019.

Find out more

Throughout the process information will be available at www.pc.leavillage.uk and through the parish newsletter.

You can discover more about Neighbourhood Planning from a number of sources, including:

Department for Communities and Local Government

www.gov.uk/government/publications/neighbourhood-planning

Wiltshire Council

www.wiltshire.gov.uk/planninganddevelopment/Planningpolicy/neighbourhoodplanning

Contact us

You can always get in touch; you can simply talk to one of the Steering Group, or if you would prefer, write, ring or message us at the following.

Write to us at: 1 Rushcroft Close, Lea,
SN16 9YJ

Call us: 01666 826873

Email us: LeaParishPlan@gmail.com

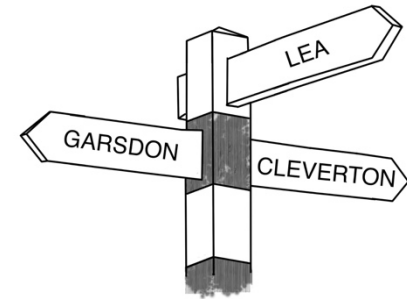
Visit us at: <https://pc.leavillage.uk>

Follow us on
Facebook: [@LeaParishPlan](https://www.facebook.com/LeaParishPlan)

Steering Group Members

Tamsyn Luggar (Chair)	
Trevor Baker	Tim Culling
Nigel Higginbottom	Colin Kershaw
Nicky Mander	Chris Pope

Signposting the future of our Community



**An opportunity to shape
the future of our
community area.**

Neighbourhood Plan 2019 to 2030

**This leaflet explains more about the
process and how to make sure that
your views are put forward.**

**Parish of Lea and Cleverton
(including Garsdon and surrounding
countryside)
February 2019**